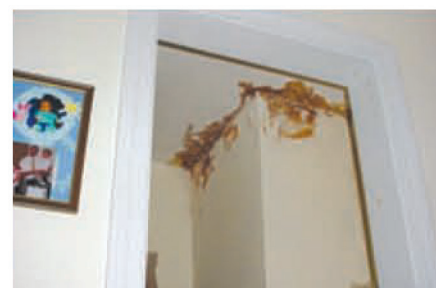


Analysis for Your Home Safety



Staining from Leaking Condensation

The condensation in your chimney is seeping through to the interior of your home, or your chimney exterior, and creating costly damage



Disintegrating Chimney Structure

Acidic moisture goes through freeze and thaw periods, expansion and contraction, creating cracks in your mortar and flue tiles



Poor Draft

You have an improper flue size matched to your heating appliance

Tight Clearance

You have inadequate clearance to the wood framing of your home

Damaged Chimney Structure

Will allow carbon monoxide, smoke, and fire to enter your home

Down-Drafting & Smoke

If you have an improperly lined flue, you can expect an unsteady draft, leading to a down-ward flow, bringing smoke into your home

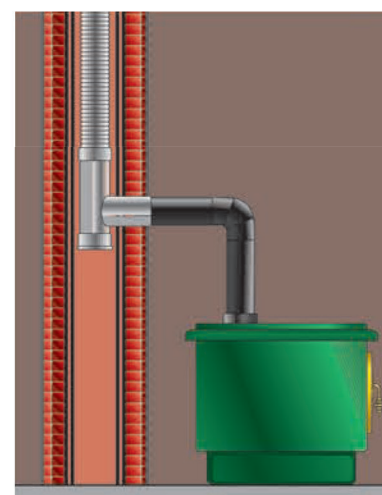
How Safe is Your Home?



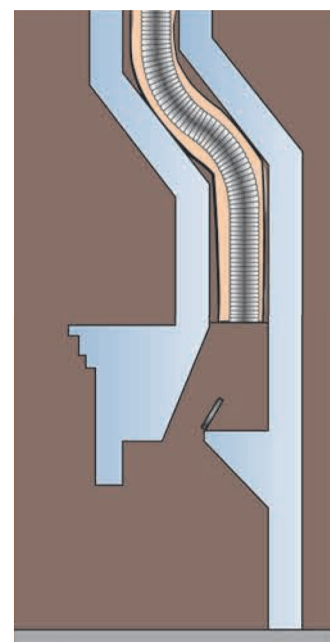
ONE Solution

for every application

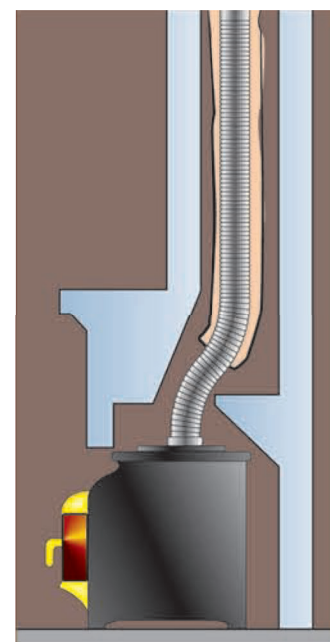
By having your chimney relined with the Premier Flex Stainless Steel Liner, you will not only increase the efficiency of your fuel burning appliance, but more importantly, you can rest assured that your chimney is safe for use.



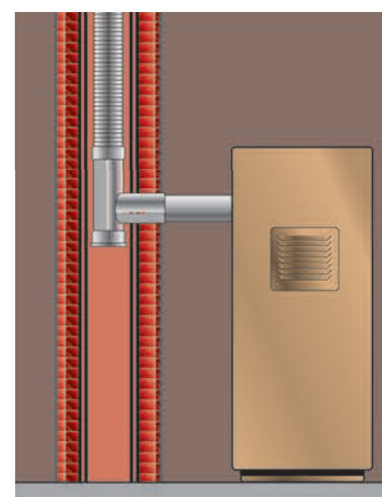
Wood and Pellet Stoves



Fireplaces



Fireplace Inserts



Furnace and Water Heaters



Premier Mix



Premier Wrap

Having your liner insulated with either **Premier Mix** -- a poured insulation mixture, or **Premier Wrap** -- a ceramic wool blanket helps create a steady draft and allows for zero clearance installation.

PROUDLY Manufactured In the USA

We've Been Manufacturing Premier Flex Stainless Steel Chimney Liner Systems Since 1992 and with the industry's largest variety of sizes, alloys and custom chimney liners, we're eager to fulfill your chimney liner needs.

Premier Flex Heavywall Liner 316 (PRL) and 304 (PR)



Premier Flex Lite



Realizing the only way to truly control a product is to manufacture. We have invested in the industry by becoming the premier manufacturer of stainless steel liners and components to match.



PREMIER FLEX

Heavy & Lite Liner Systems



Why reline a chimney flue –especially when it looks fine?



The flue liner is often the most neglected part of your chimney. Traditional masonry flue tiles cannot handle the acidic moisture created by your furnace, boiler, or hot water tank. This acid attacks and breaks down flue tiles and mortar in between them. This damage can prevent harmful exhaust gases from leaving your chimney and home.

SAFETY TIP

THE NATIONAL FIRE PROTECTION ASSOCIATION (in NFPA 211) says, "Chimneys, fireplaces, and vents shall be inspected at least once a year for soundness, freedom from deposits, and correct clearances. Cleaning, maintenance, and repairs shall be done if necessary."

The Interior is often dramatically different and in need of attention

OIL HEATING APPLIANCES

When mixed with acidic condensation, soot buildup from your oil furnace and hot water tank on the walls of the chimney create sulfuric acid, which will deteriorate the clay flue tiles.

GAS HEATING APPLIANCES

Greater amounts of condensation produced by the high efficiency of newer heating appliances, combined with many installations in old oil furnace flues, speeds up deterioration. 2 cubic feet of water vapor is produced with each 1 cubic foot of gas burned.

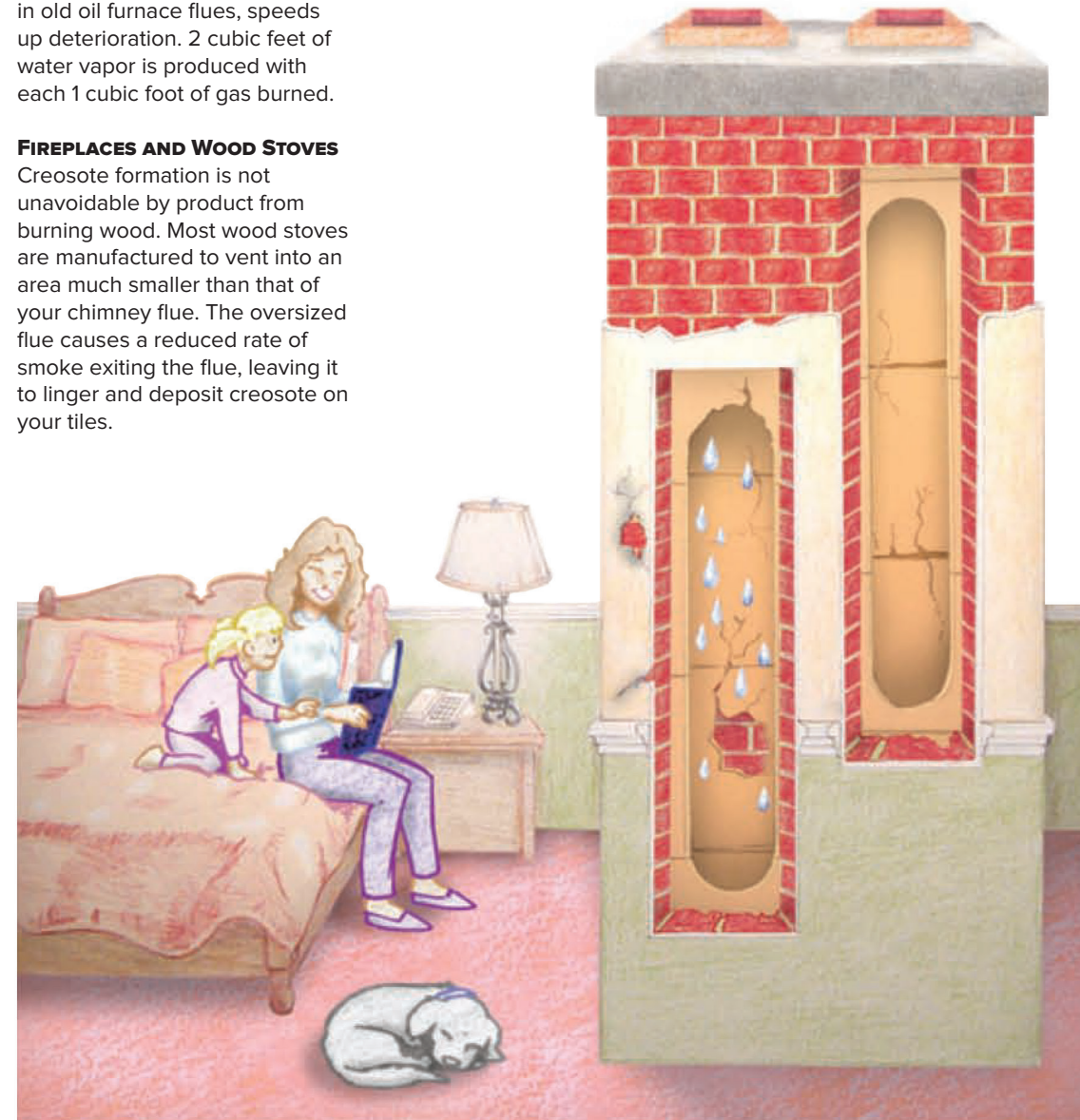
FIREPLACES AND WOOD STOVES

Creosote formation is not unavoidable by product from burning wood. Most wood stoves are manufactured to vent into an area much smaller than that of your chimney flue. The oversized flue causes a reduced rate of smoke exiting the flue, leaving it to linger and deposit creosote on your tiles.

The Danger with creosote is the 450°F ignition point—consider the average wood stove produces gases leaving your fireplace at 300° F to 900° F—causing a chimney fire of up to 2100° F. If your chimney flue has no tiles, it is likely that these gases and creosote are leaking directly into your home, leading to a possible fire or creating carbon monoxide poisoning.

REAL STATISTICS

In 2001, an estimated 18,300 reported home structure fires involving chimneys supporting solid fueled equipment resulted in \$48 million in direct property damage. (NFPA)



Don't let damage & deterioration lead to hazardous conditions

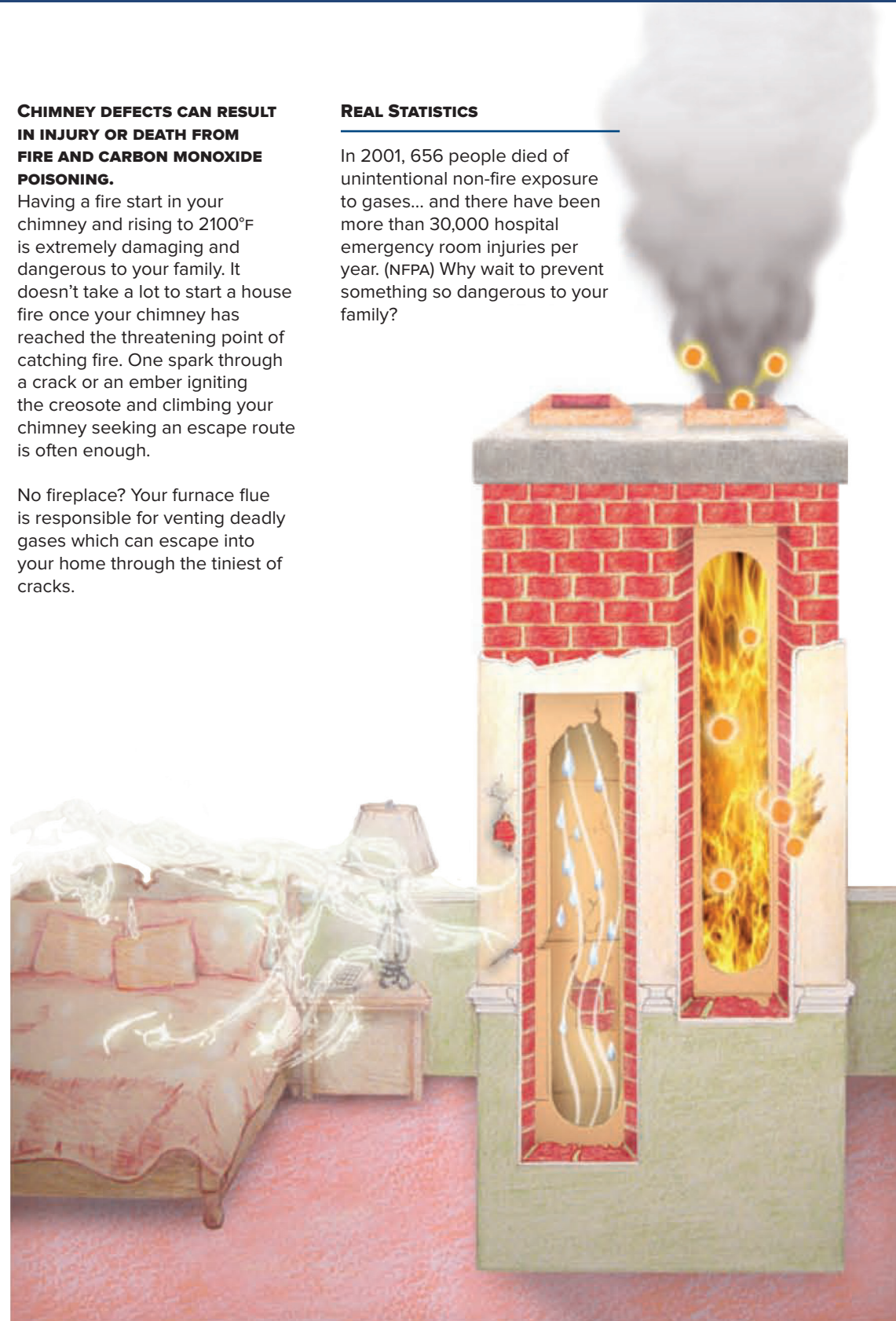
CHIMNEY DEFECTS CAN RESULT IN INJURY OR DEATH FROM FIRE AND CARBON MONOXIDE POISONING.

Having a fire start in your chimney and rising to 2100°F is extremely damaging and dangerous to your family. It doesn't take a lot to start a house fire once your chimney has reached the threatening point of catching fire. One spark through a crack or an ember igniting the creosote and climbing your chimney seeking an escape route is often enough.

No fireplace? Your furnace flue is responsible for venting deadly gases which can escape into your home through the tiniest of cracks.

REAL STATISTICS

In 2001, 656 people died of unintentional non-fire exposure to gases... and there have been more than 30,000 hospital emergency room injuries per year. (NFPA) Why wait to prevent something so dangerous to your family?



Your perfect solution

Premier Flex™ Heavywall 316 (PRL), 304 (PRL) and Premier Flex Lite

THE PROFESSIONALS CHOICE FOR SUPERIOR VENTING EFFICIENCY

The PREMIER FLEX™ Stainless Steel Flexible Chimney Liner is designed to reline existing chimneys or to be used as a liner in new construction.

THE PREMIER FLEX™ LINER ALLOYS ARE DESIGNED SPECIFICALLY TO RESIST ACIDS AND EXTREME TEMPERATURE STRESS DURING HOT AND COLD CYCLES.

PREMIER FLEX™ is extremely durable. The Premier Flex Heavywall is made from .015 Stainless Steel and the Premier Flex Lite is constructed of .10" thick steel. It features an interlocked design to maximize strength and flexibility. It's a very rugged liner we recommend for those tight winch-able situations. Premier Flex Heavywall 316 can be used for all fuel burning appliances including; wood, wood pellet, oil, gas, and corn. Premier Flex Heavywall 304 can be used for wood burning appliances. Premier Flex Lite, the thinner steel has the durability of the heavy wall liner but at a more manageable weight. Offered in 304 and 316 L/Ti. Premier Flex can withstand being ovalized and rectangularized to accommodate for unusual offsets or rectangular chimneys. When a liner is taken "out of round" it does reduce the cross sectional area. If you need help sizing a liner, please call 800-897-8481.



FULLY TESTED AND LISTED BY UNDERWRITERS LABORATORIES TO UL 1777 AND UL 441 FOR WOOD, PELLET, OIL, GAS, AND COAL.

The M-FLEX™ CB Stainless Steel Flexible Chimney Liner is backed by a limited Lifetime Warranty.